



ADMISSION 2004-2005 : GDPD

Test No. 3

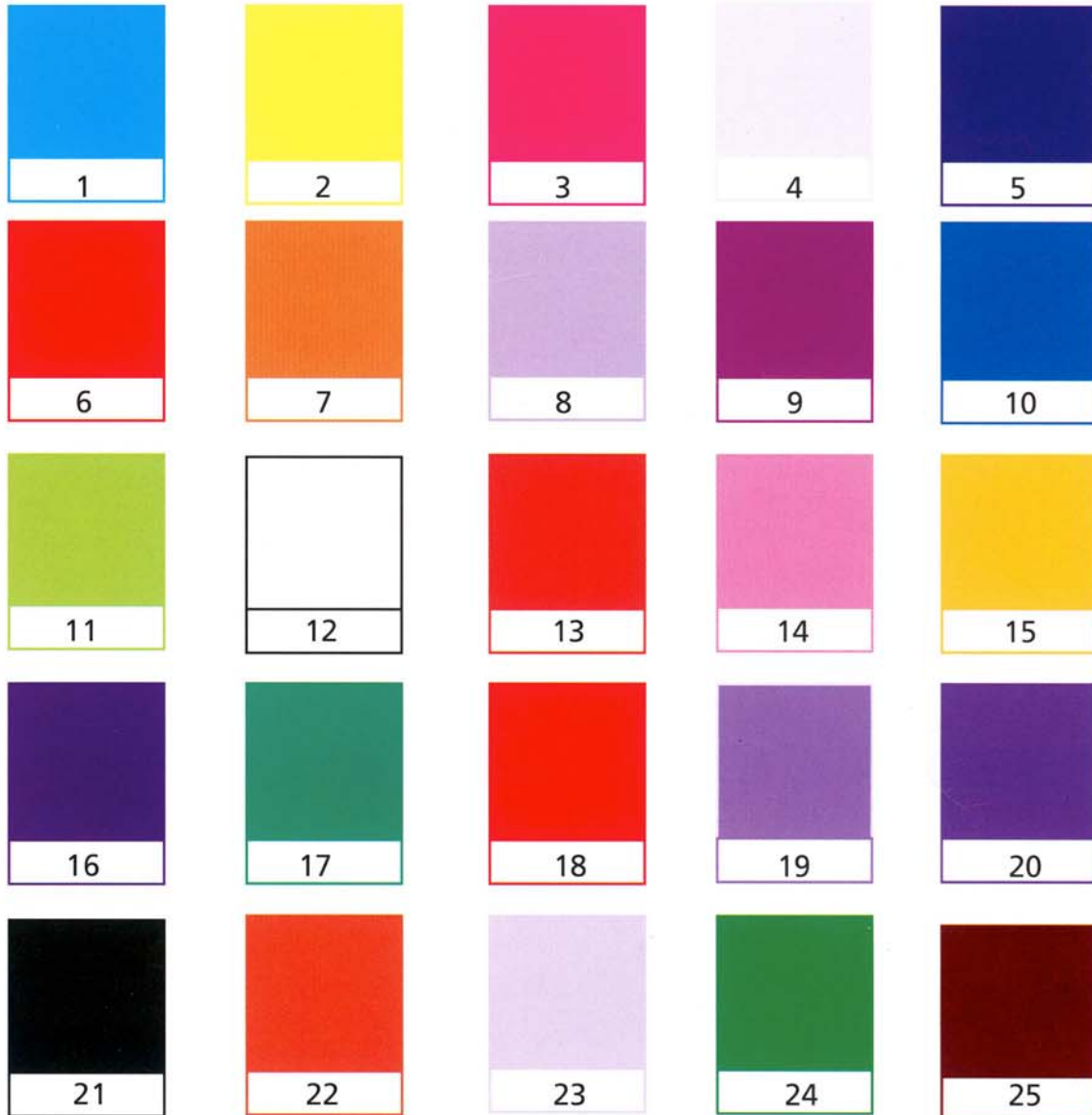
Time : 45 mts. Total Marks : 25

Roll No.

Invigilator's Signature:

Colour (Written Test)

1. Given below on this sheet is a Colour grid. Each Colour has a serial number.
2. Please answer the questions from part 1 to part 3 by just writing in the blank boxes the serial number of the Colour you selected as your answer.
3. In part 4 you need to write a paragraph.
4. Use ball point pen/fountain pen only for writing.



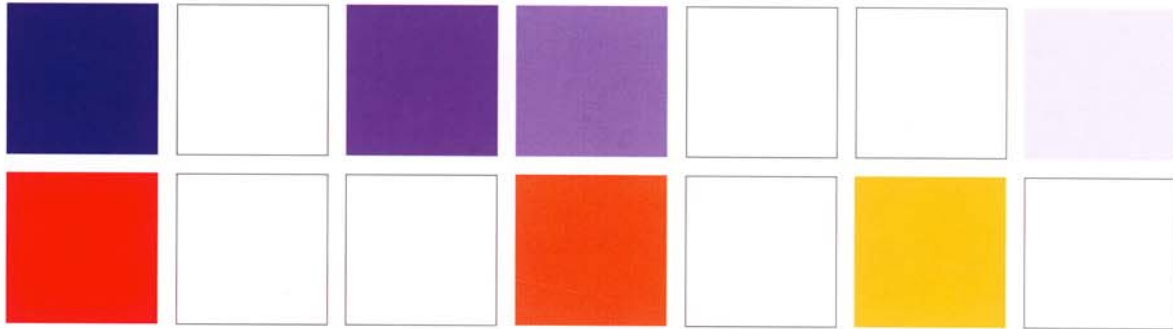
Roll No.

Part 1 Colour theory and techniques

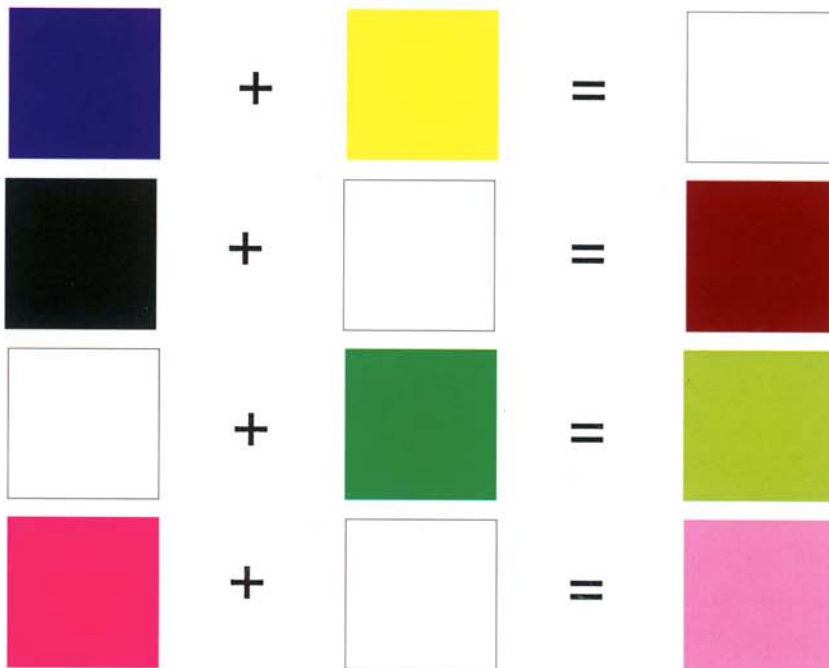
Marks 08

Answer the following questions by just writing in the blank boxes the serial numbers of the colours selected by you from the grid.

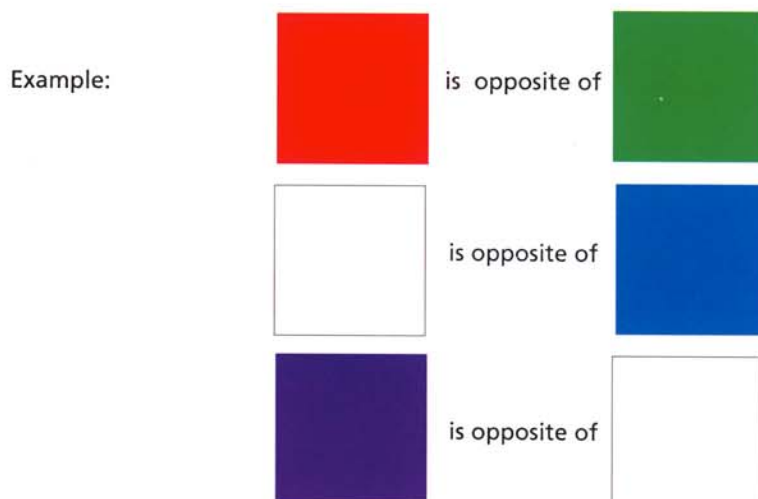
a. Fill in the blanks / complete the series



b. Answer as per the water colour mix



c. Fill in the blanks according to the interrelations as given in the example



Roll No.

Part 2 Colour perception and colour association

Marks 06

Suggest the colour palette (set of preferred colours) for a composition to paint a picture of each of the following: (Answer in **all three boxes**. You may repeat a colour to indicate its dominance according to your imagination, however **select at least two colours** for each set of answers.)

a. hot

b. evening

c. garden

d. sweet

e. poison

f. young

Roll No.

Part 3 Colour and emotions / Psychological aspect of colour

Marks 06

Suggest the most appropriate colours to depict the following moods
In each box just write the serial number of the colour selected from the grid.

a. peace

b. happiness

c. anger

d. dullness

e. pain

f. comfort

